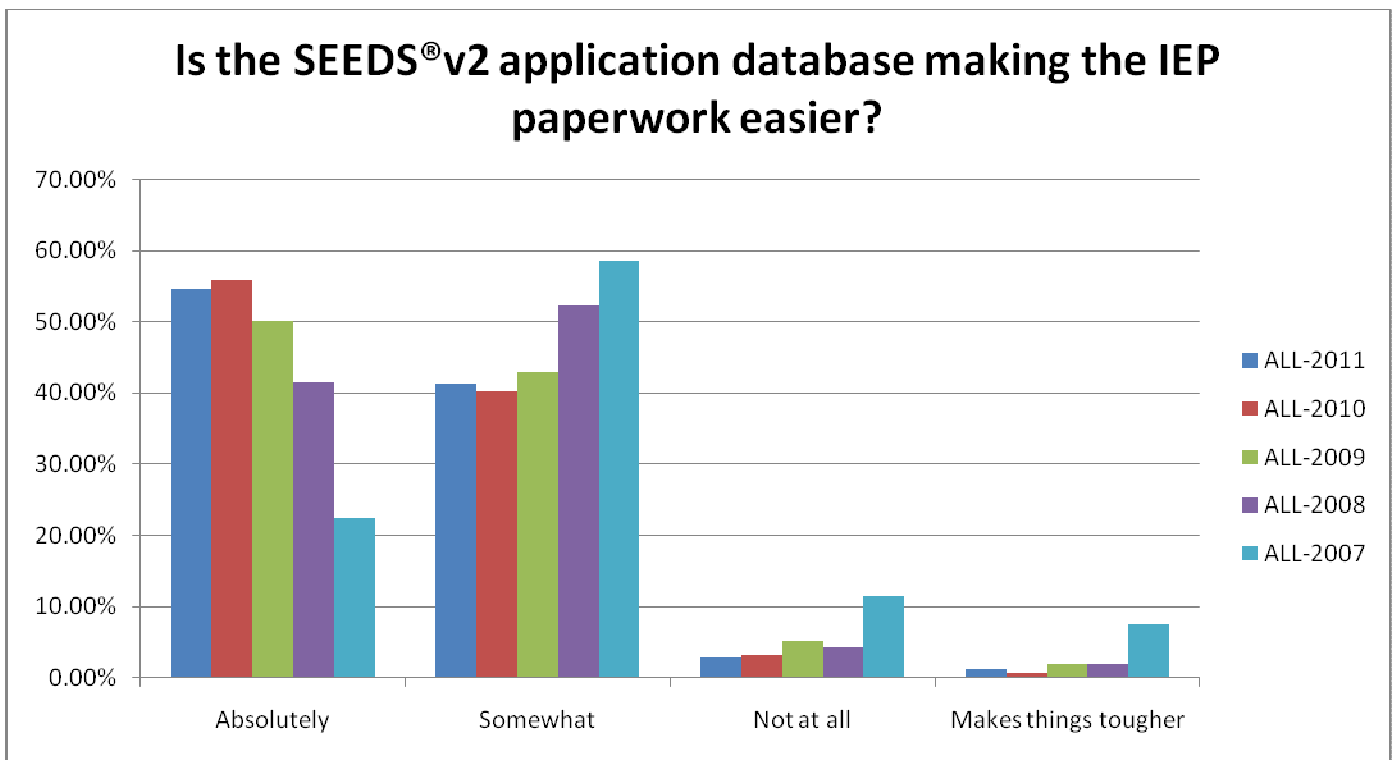
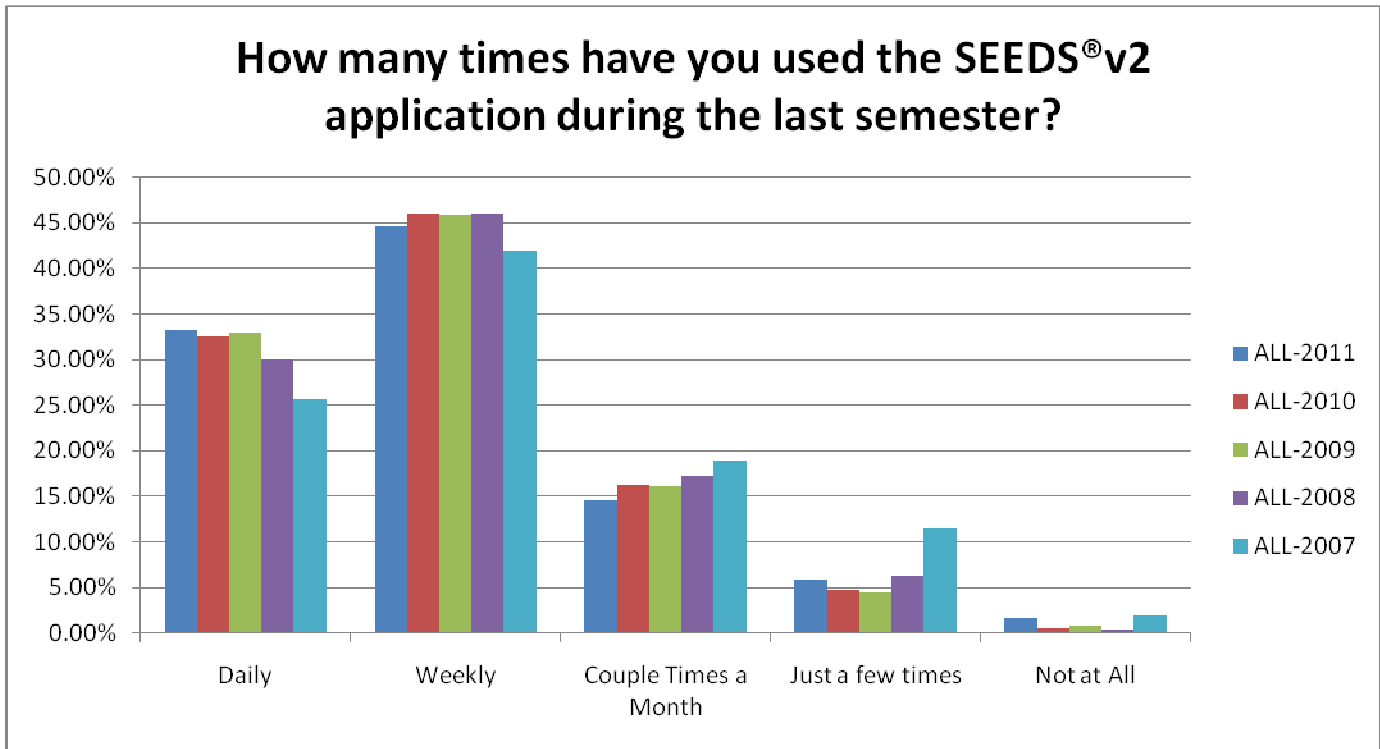
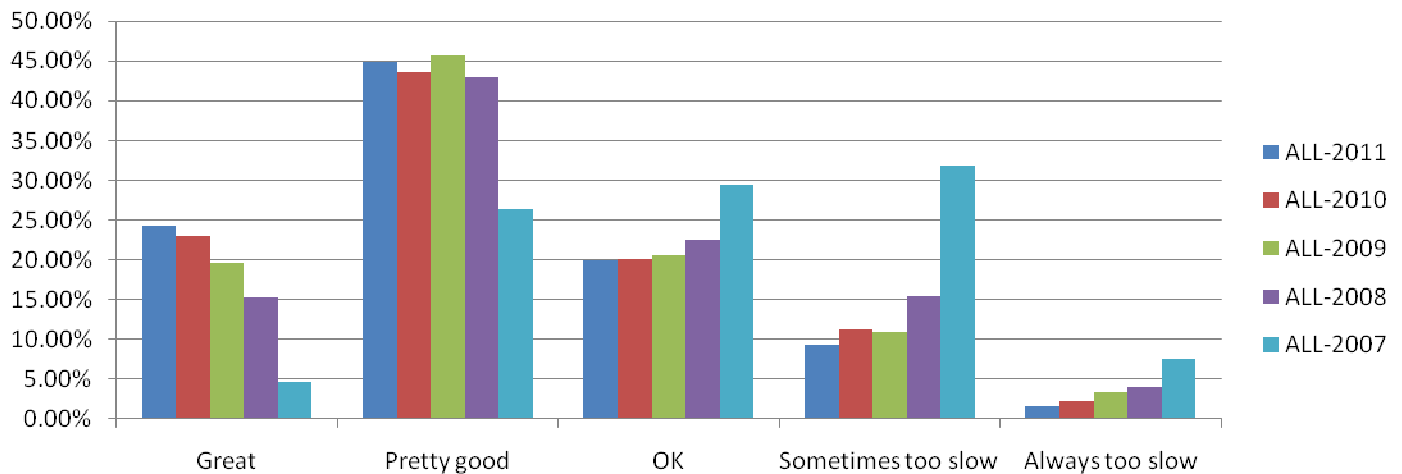


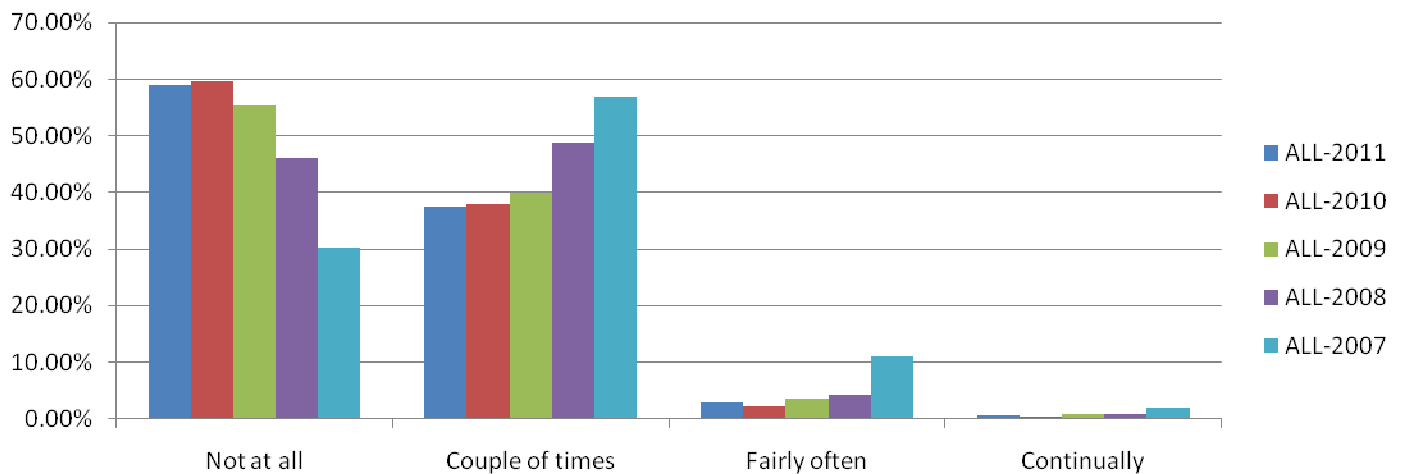
## 2011 SEEDS®v2 Survey Results



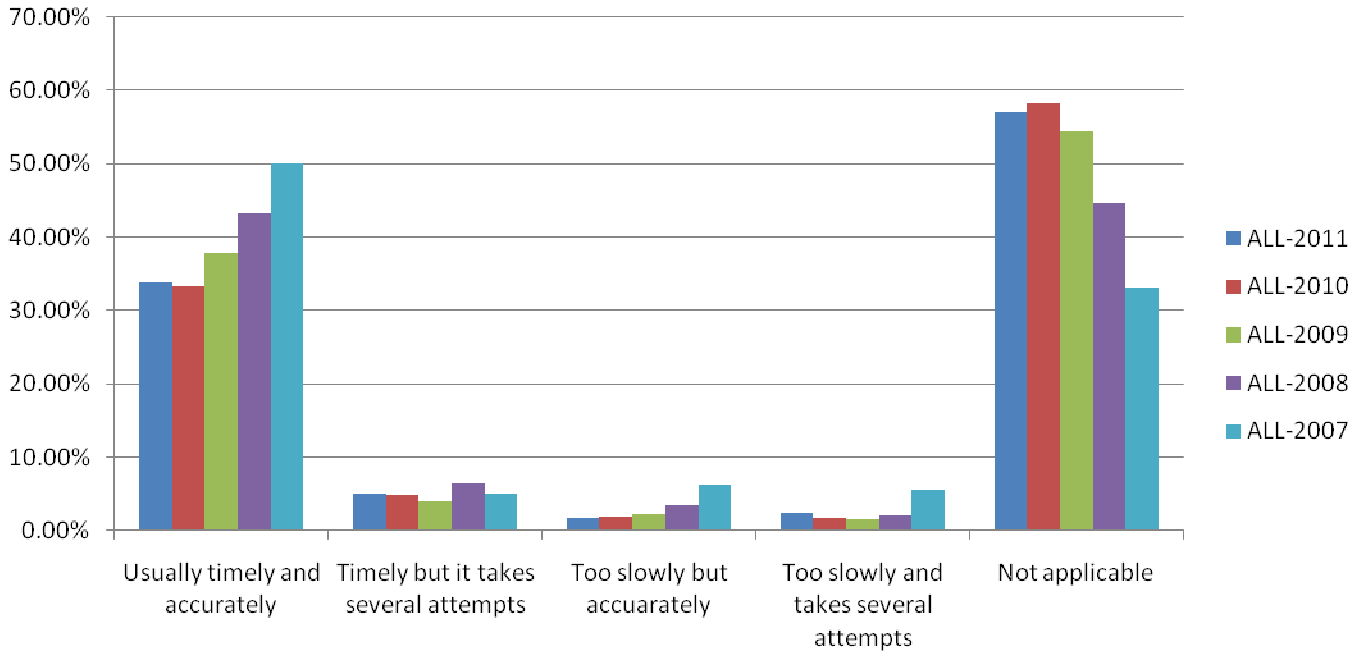
## Recognizing that SEEDS®v2 is transferring data thru the Internet and among documents, do you feel that the response time is appropriate?



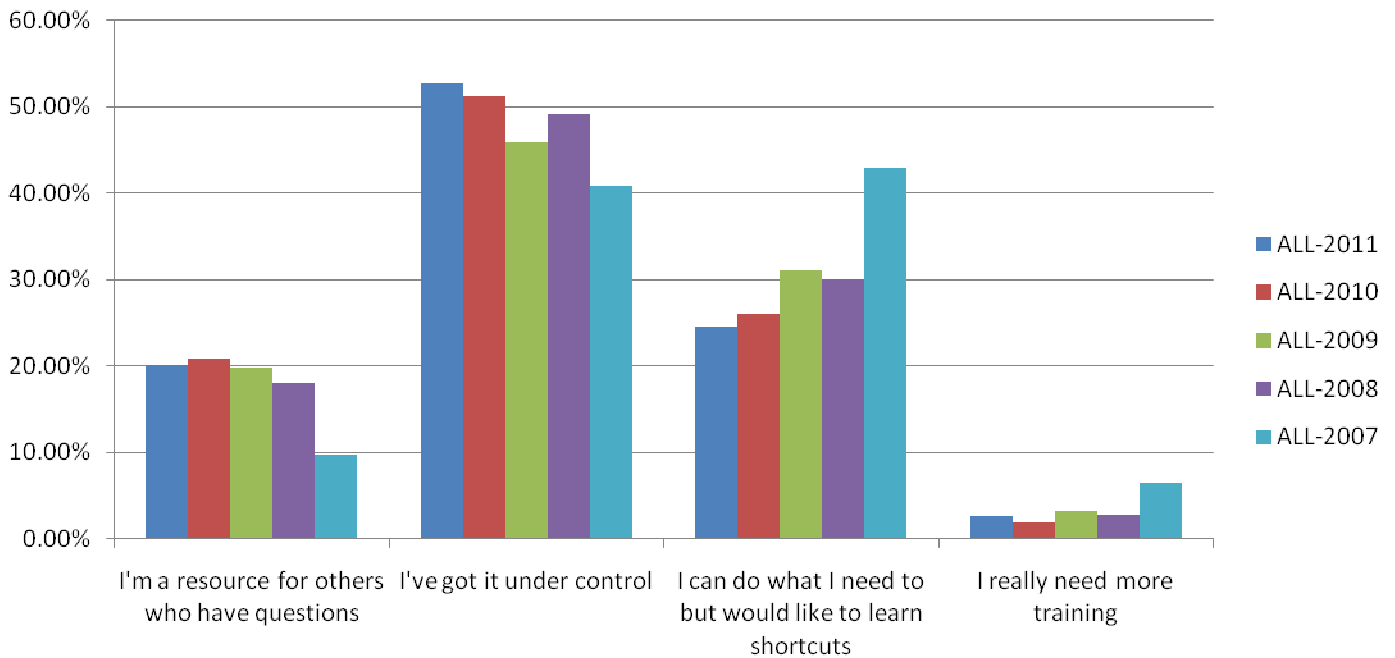
## How many times have you requested help solving a problem in using the SEEDS®v2 Forms database during the last semester?



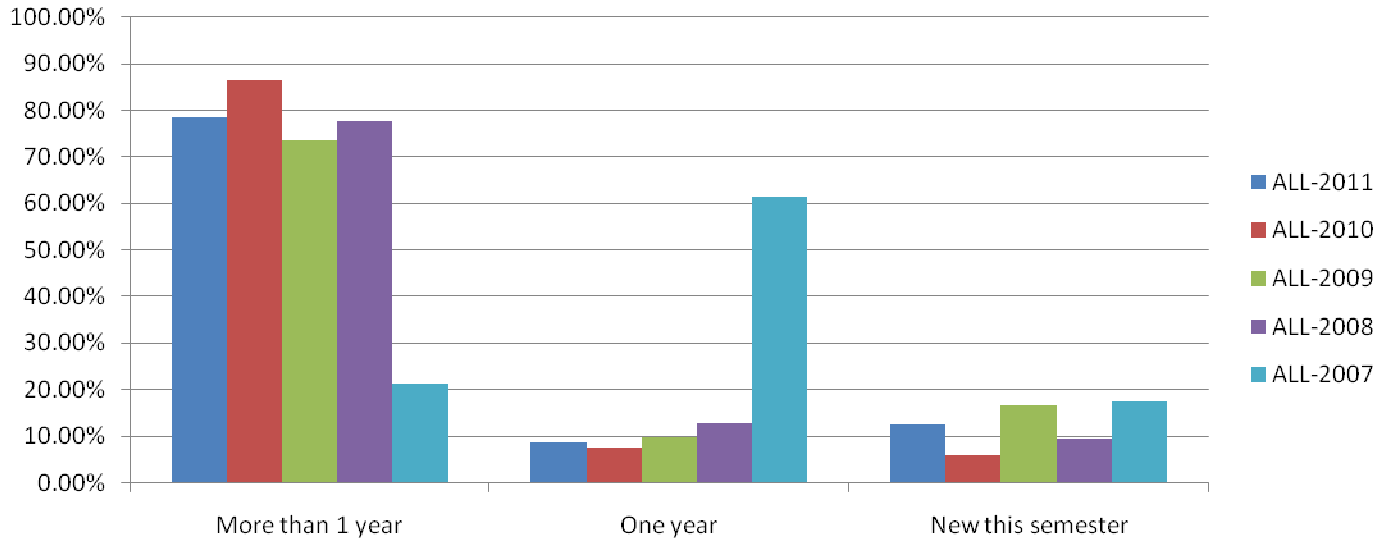
## How well have your problem requests been resolved?



## How comfortable are you in using the SEEDS<sup>®</sup>v2 Forms database?



## How long have you used this system?



## Summary of 2011 Survey Comments

